

Customer :

customer

Customer part :

customer part

Comment :

Comment

S1=0.04

S2=0.16

Tmax=425

Tp S2=464.0

PI=0.18

HI=36

Sample =10053.0

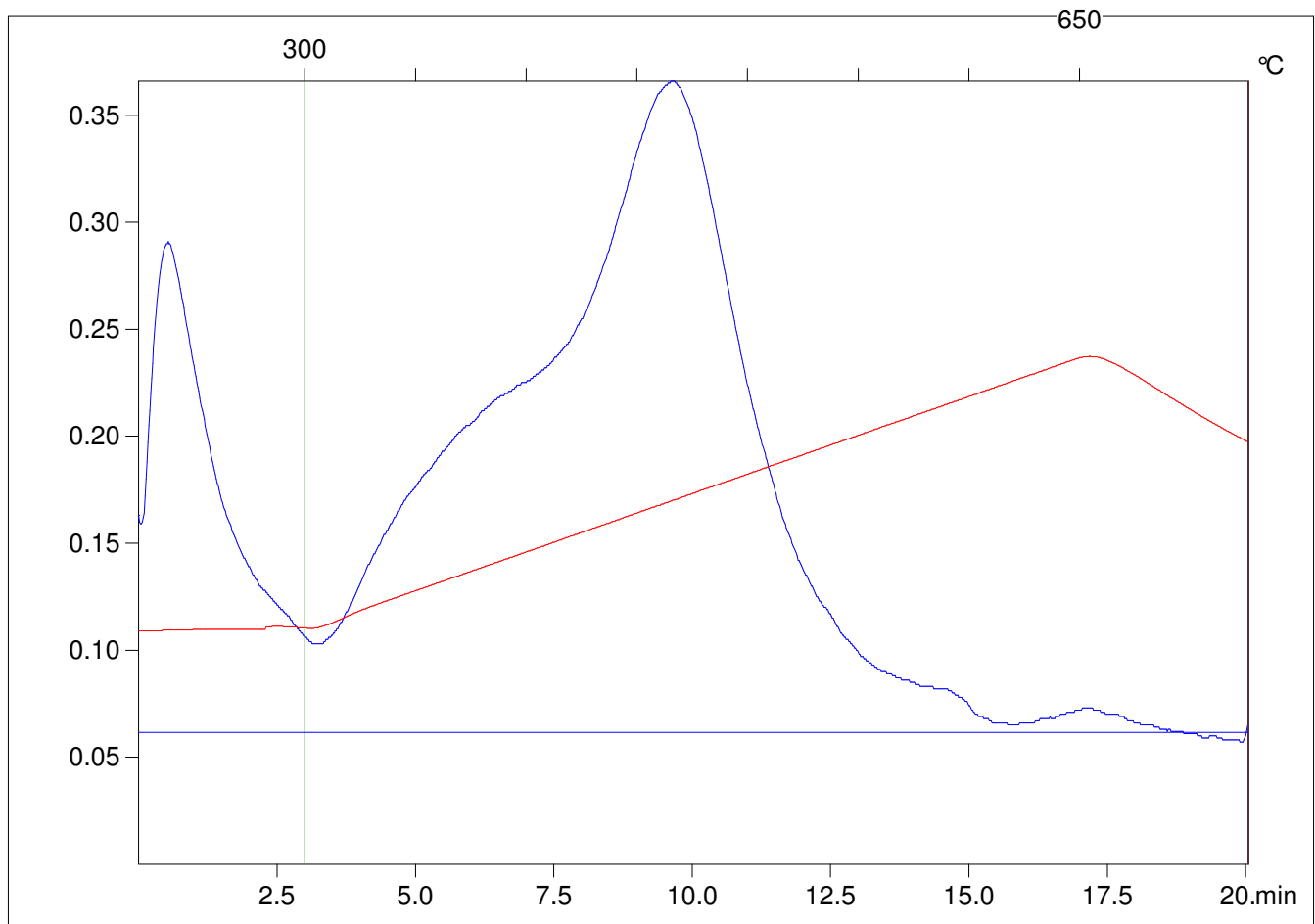
Method =Bulk Rock

Cycle=Basic

KFID(10*9)=1167

Qty =70.7

TOC=0.45



C:\VINC\PK141021\PK013.R00 : FID pyrolysis graphic

State

Pyro Status

Oxi Status